

FeeMaster Smart Entry Station

PRODUCT DESCRIPTION

The FeeMaster entry station is designed to be used as a means of recording the date and time that a vehicle enters a car park.

Located at the entrance of the car park, it issues tickets to visitors as they arrive. Each ticket is printed with a barcode containing a serial number and the date and time at which the ticket is issued. The action of taking the ticket triggers an 'open' signal to the entry barrier.

The ticket will normally be required to be taken to an attendant's station/reception desk where the arrival date and time will be used in conjunction with the FeeMaster Smart Attendant's Console. The console can then issue Mifare access control cards and if necessary barcode exit tokens and customers receipts.

Where the exit station is fitted with a barcode reader, it is possible to enable the use of the entry ticket as a means of allowing exit from the car park if used with the preset grace period. This enables such facilities as charge free 'drop-offs' (hotels conference centres etc.) and charge-free exit where no parking space can be found.

A smart card reader is included to enable staff and long term visitors to enter without requesting a ticket.

FEATURES

- Optionally prints a company logo on the ticket.
- Robust and efficient ticket dispensing mechanism.
- Ensures that visitors take tickets with the correct entry time & date.
- Integral loop detector ensures that tickets are only dispensed when a vehicle is present.
- Entry control using Mifare cards for staff and long term visitors

SPECIFICATIONS

Electrical

Supply voltage: 240V AC (Low voltage adaptors included)

Physical

Housing: Painted steel pedestal with side access panel.
 Standard Fittings: Ticket issuer mechanism, ticket issuer controller, power adaptors, heater, card reader and PD132 loop detector.
 Optional Fittings: Aiphone compatible intercom slave unit, mounting brackets for Telguard GSM intercom.
 Overall Dimensions (mm): 1200 x 360 x 275 (H x D x W)

Inputs

Arming Loop: Standard vehicle detection road loop

Outputs

Open Signal: Voltage free relay contacts (30V DC, 2A)
 Low Paper Alarm: Voltage free relay contacts (30V DC, 2A)

Ticket Data

Barcode (optional): Includes site code, issuing station ID, serial number, time & date, grace period and optional check digits.
 Logo (optional): Customers logo as a bit map
 Text (optional): Date & Time, User information (typically "Present this ticket at reception")

Issuer Head

Print Speed: Maximum 180 mm/s
 Paper Feed: Friction Feed Method
 Print Head: Line Thermal Head
 Presenter: With Recovery Function

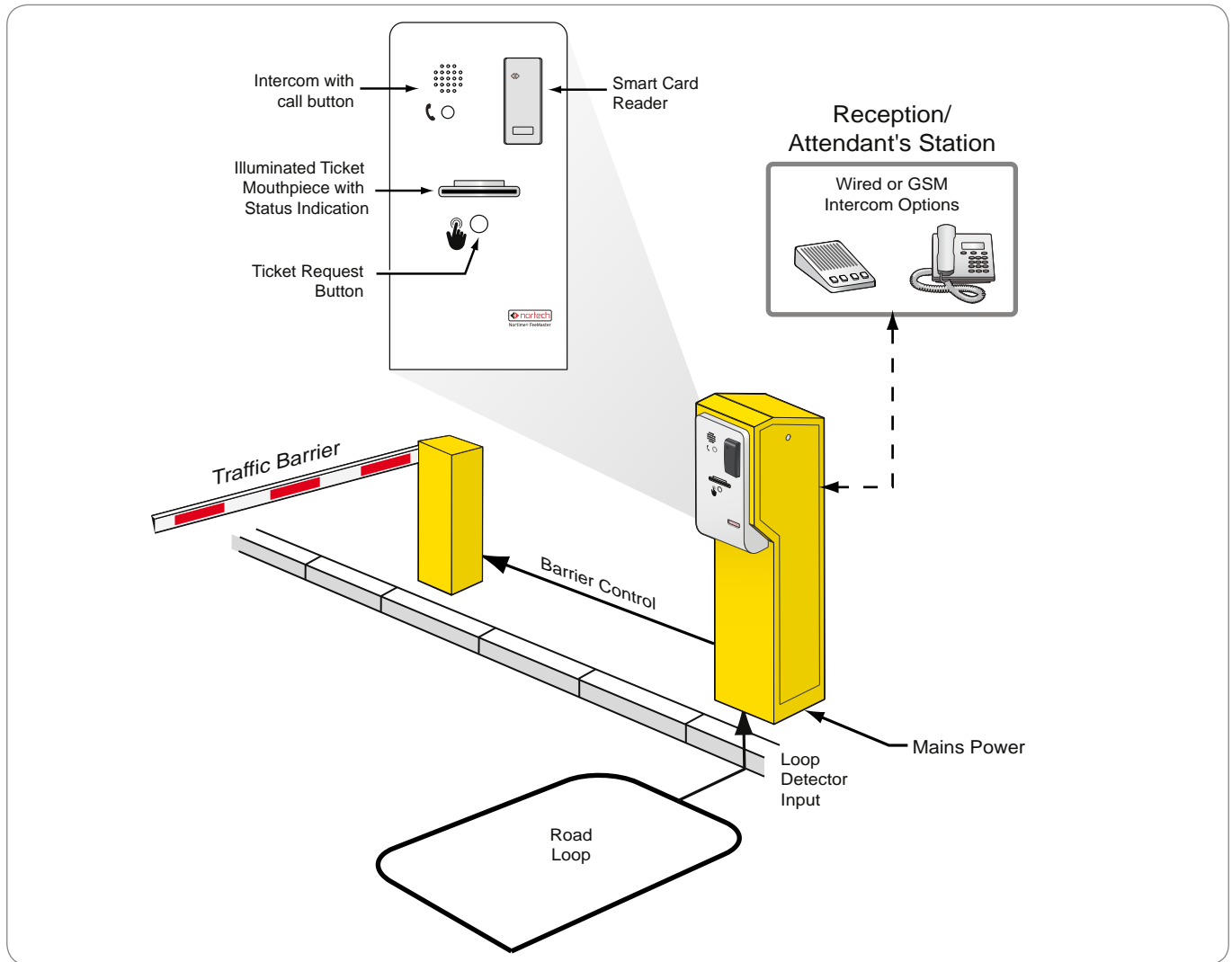
Paper Roll

Type: Thermal Paper
 Paper width: 80mm +/- 0.5mm
 Paper thickness: 65 µm to 75 µm
 Maximum Roll Diameter: 150mm



FeeMaster Smart Entry Station

Connection Details



Ordering Information

FMS-TD/CRC Roadside pedestal fitted with a ticket issuer and smart card reader to allow two entry options. Compatible with the FeeMaster Smart system.

FMS-TD/CRC-INT Roadside pedestal fitted with a ticket issuer and smart card reader to allow two entry options. Compatible with the FeeMaster Smart system. Also includes a slave intercom.

MASTER-NT1 Single channel master intercom unit to be used with slave intercom. Supplied with mains power adaptor.

MASTER-NT5 Five channel master intercom unit to be used with slave intercom. Supplied with mains power adaptor.

FMS-TD/CRC-TG Roadside pedestal fitted with a ticket issuer and swipe card reader to allow two entry options. Compatible with the FeeMaster Smart system. Also includes a bracket to mount Telguard GSM intercom.