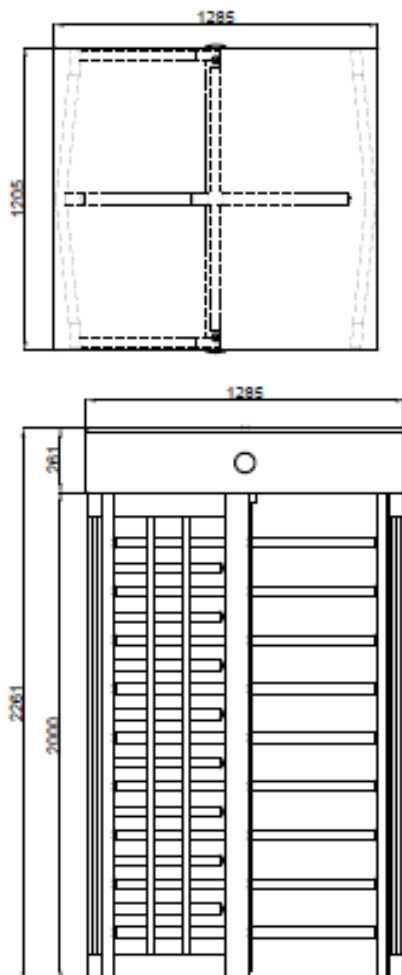


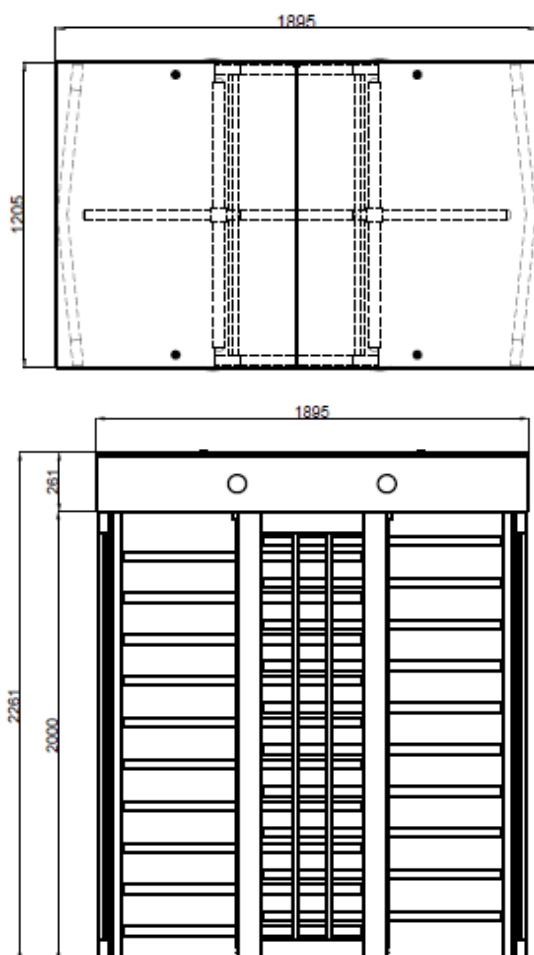
- Power Requirements** : 110/220V. 60/50Hz. AC (%±10) 24V. DC at standby
 -For Single-Sided: ~11W. max. ~60W.
 -For Double-Sided: ~22W. max. ~120W.
- Dimensions** : 1285 x 1205 x 2261 mm (Single-Sided)
 1895 x 1205 x 2261 mm (Double-Sided)
- Weight** : -For Single-Sided: ~ 350 kg. -For Double-Sided: ~ 550 kg.
- Arm Features** : Four-section (for double-sided a pair) rotors (90°). Each section contains nine (for double-sided ten) Ø42mmx2.5mm electrostatic powder coated (Opt. Hot dipped galvanized) or Ø40mm 304-Grade (Opt. 316-Grade) Stainless Steel (Opt. Ø38, Ø42 and Ø45mm) arms.
- Body Features** : Constructed on main carriers, supported by tube profiles on lateral panels, strengthened by separators.
 Material used is phosphate-coated steel, finish is electrostatic painted, stainless steel (304-Grade) or mixed combinations. (Opt. Hot dip galvanizing under the coating for outdoor models)
 Top cover is protected against water for outdoors installations. Aesthetically complemented by top side frontals.
 As an option, upright bars at the frame can comply with UK H&S Regulations (The gap between upright bars is less than 98 mm).
- Operating Temperature, Humidity, IP Rating, MCBF**: -20°C to +68°C (Opt. -50°C with heater unit)
 RH 95% non-condensing / IP 54 Outdoor Model (Opt. IP 56) / 1M Cycles
- Control System** : All inputs are opto-coupler protected .Controlled by dry contact or grounding input. Compatible with all access control systems that provide dry contact or grounding outputs. Optional RS232/RS485/TCP IP control module is available.
- Flow Rate** : Passage Capacity of Mechanical unit for Manual Version= ~ 60 passages/minute;
 Nominal= ~10-25 people/minute (Recommended reference figure)
 ❖ Please note that; the above given figures are approximate for one person per walkway or lane.
- Explanatory Note**: The system allows the new passage authorisation in less than ~0.3 seconds. After the passage authorization, the total passage time depends on the pushing and passage speed of the people.
 ❖ Utilisation of different access control units can change the flow rate.

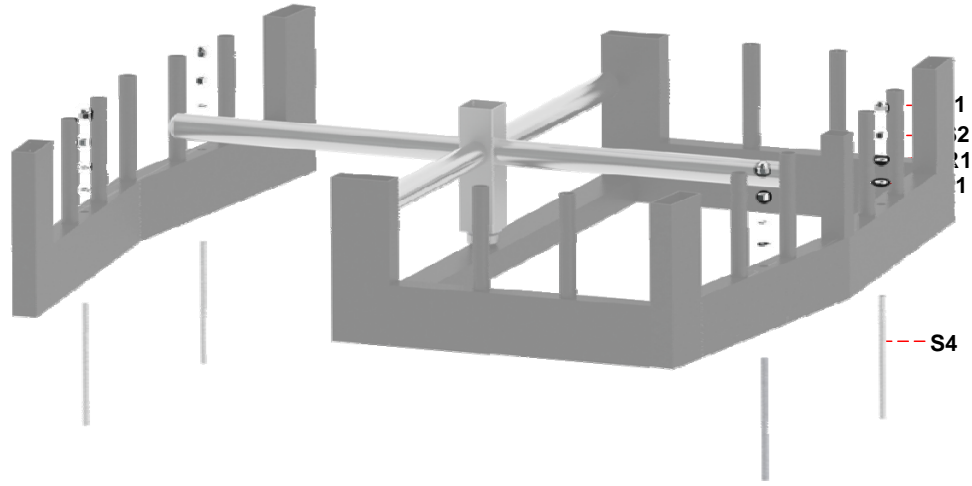
System Features: See Operating Systems Specifications Table - **Page 6**
Additional Option: For the integration of extended canopy, please see **Page 4**
**Design and specifications are subject to change without notice.*

BT 402 S

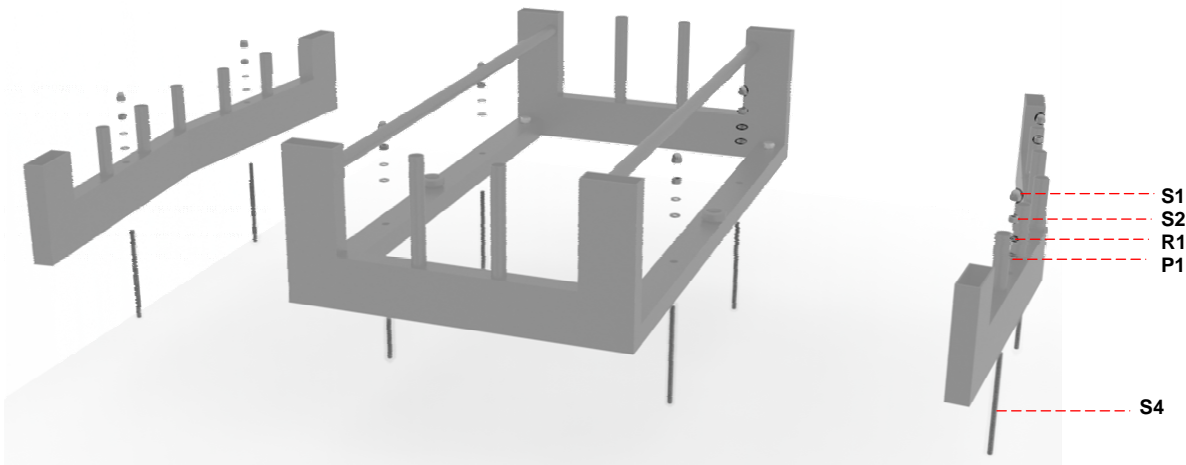


BT 402 D



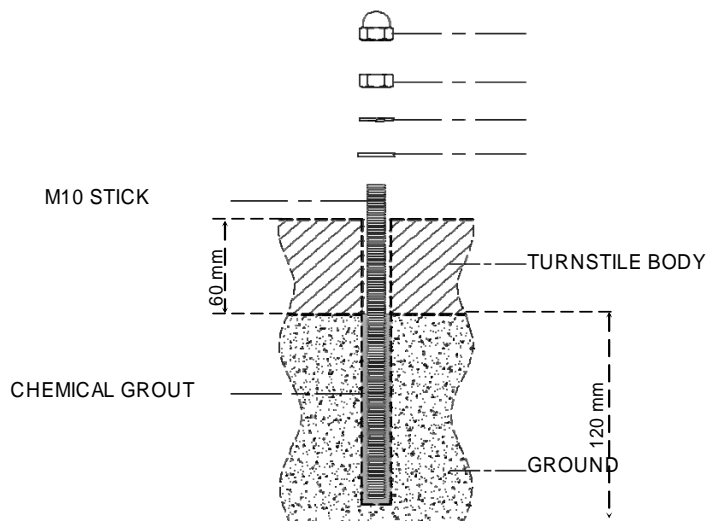


BT 402 S



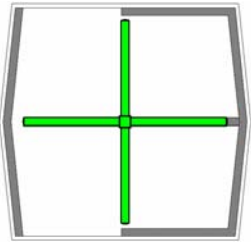
BT 402 D

GROUND MOUNTING DETAIL

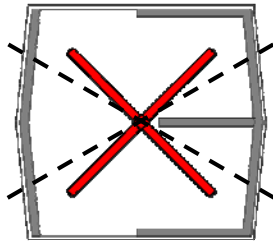


	P1	R1	S1	S2	S3	S4	V1	P2
	M10 chromium stamp	M10 nut washer	M10 closed nut	M10 nut	M10x130 stick	M10x220 stick	M12X30 thumb head screw	M12 nut
BT 402-S	4	4	4	4	-	4	-	-
BT 402-D	8	8	8	8	4	4	4	4

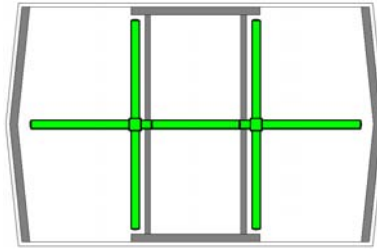
CORRECT



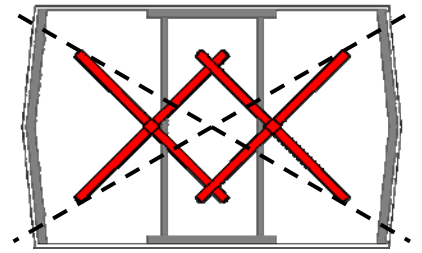
WRONG



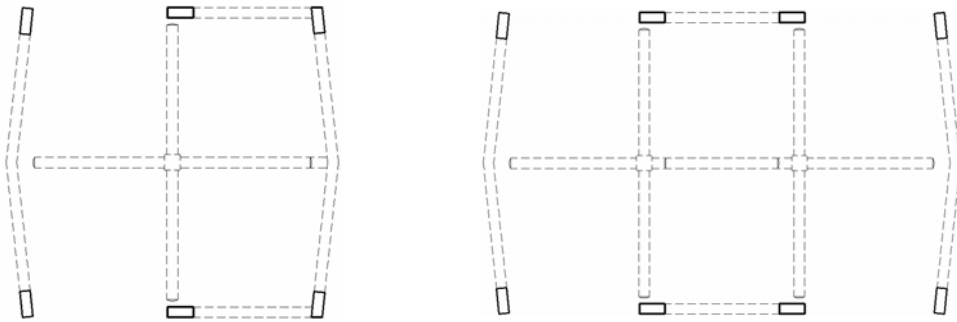
CORRECT



WRONG

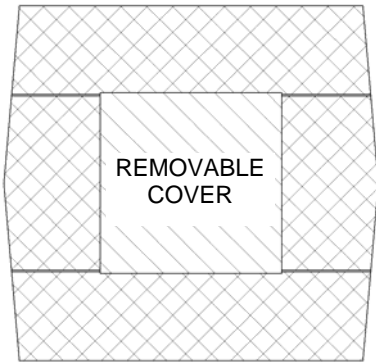


SECTIONS MARKED AS BLACK ARE CABLE PASSAGE AREAS.

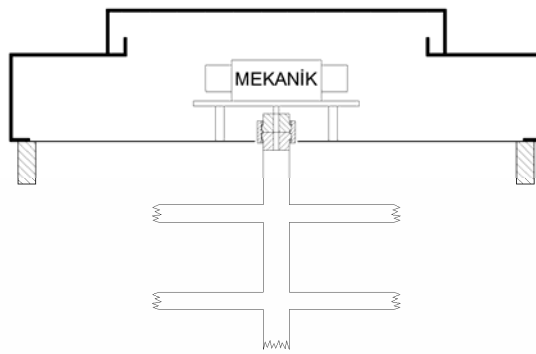


BT 402 S TOP COVER

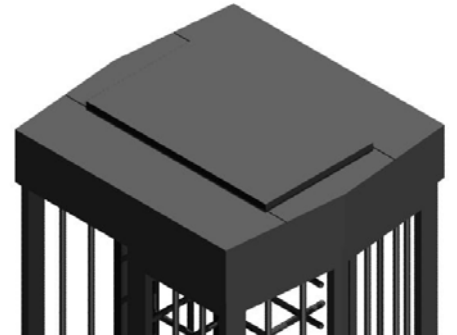
TOP VIEW



SIDE VIEW

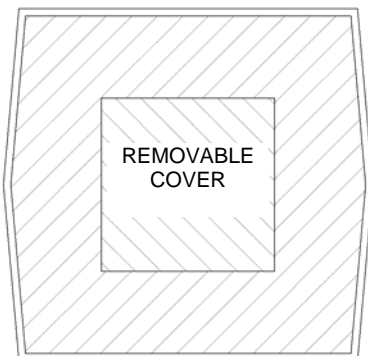


MODEL

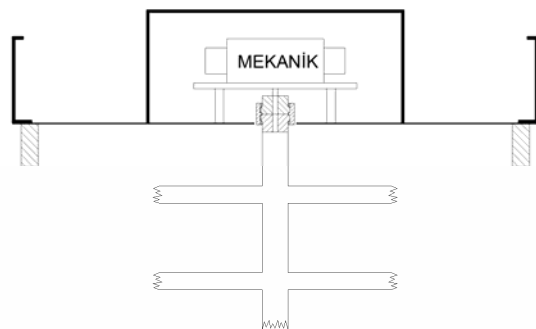


BT 402 S STANDARD

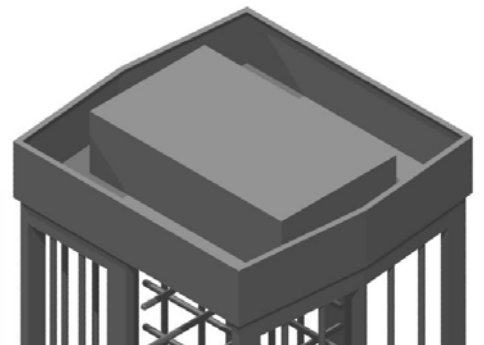
TOP VIEW



SIDE VIEW



MODEL

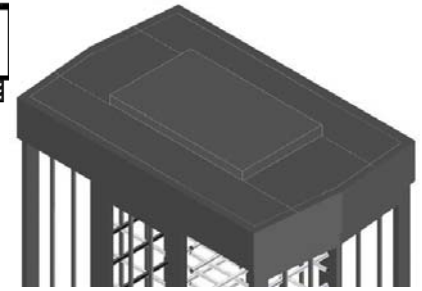
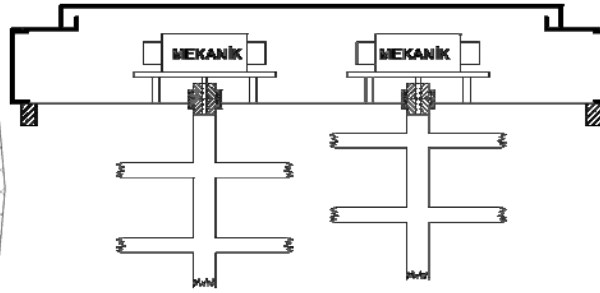
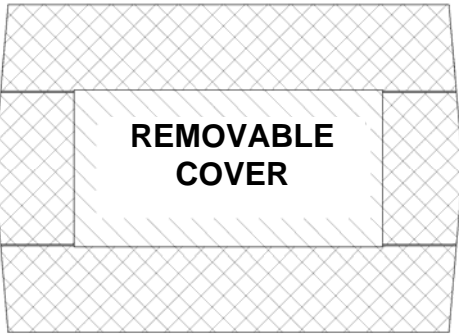


BT 402 D TOP COVER

TOP VIEW

SIDE VIEW

MODEL



BT 402 D STANDARD

TOP VIEW

SIDE VIEW

MODEL

